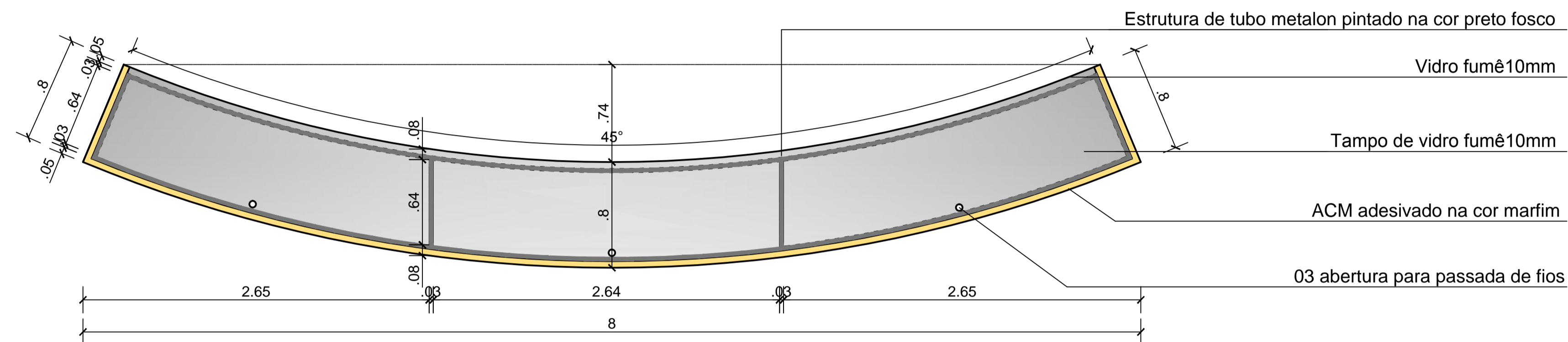


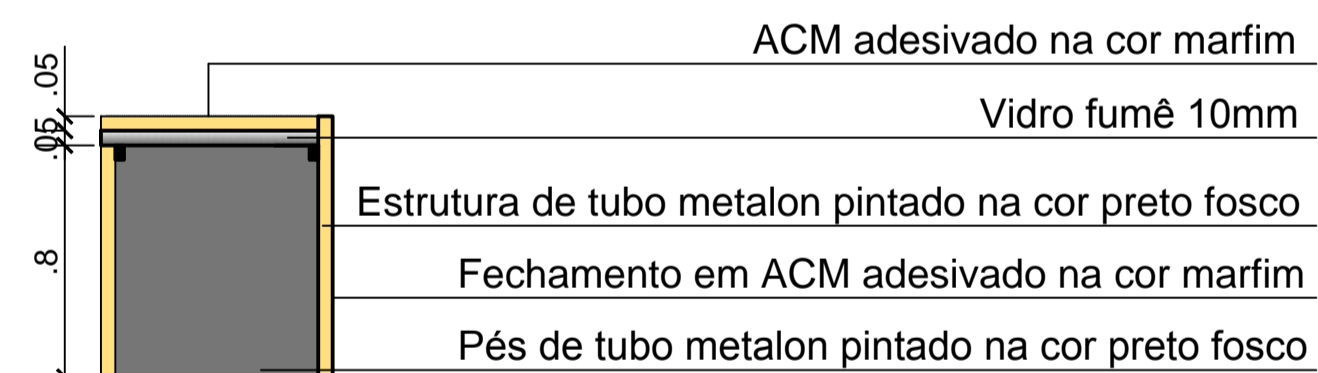
VISTA SUPERIOR ABERTURAS CIRCULARES ESC: 1/25



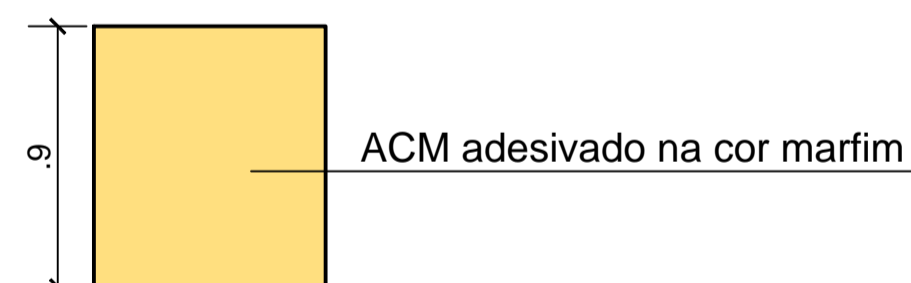
VISTA SUPERIOR ESC: 1/25



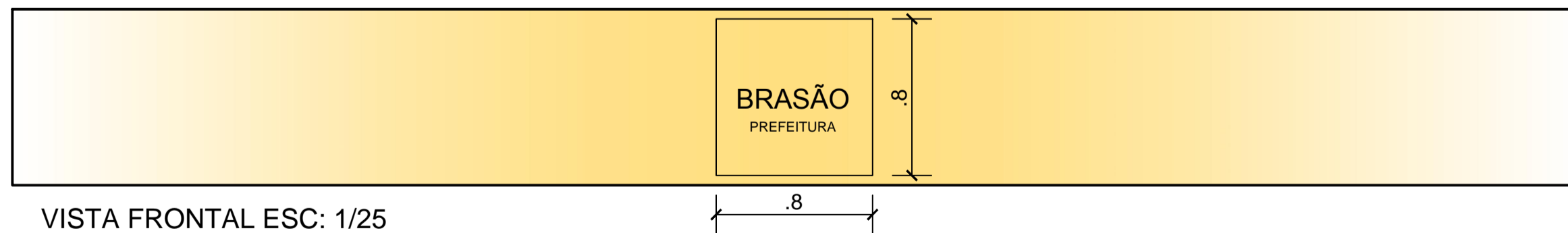
CORTE LONGITUDINAL ESC: 1/25



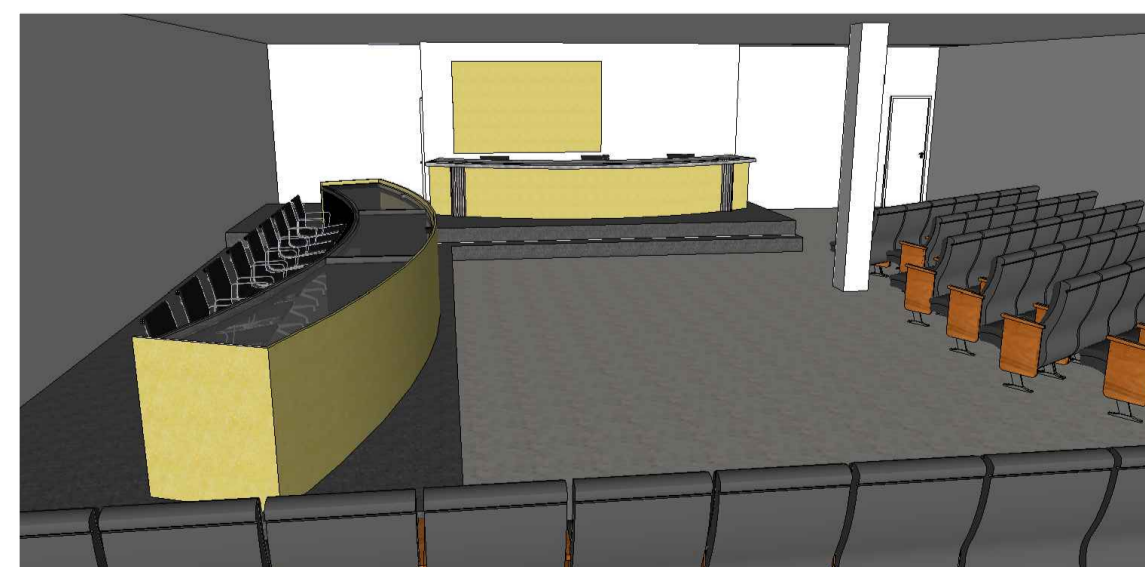
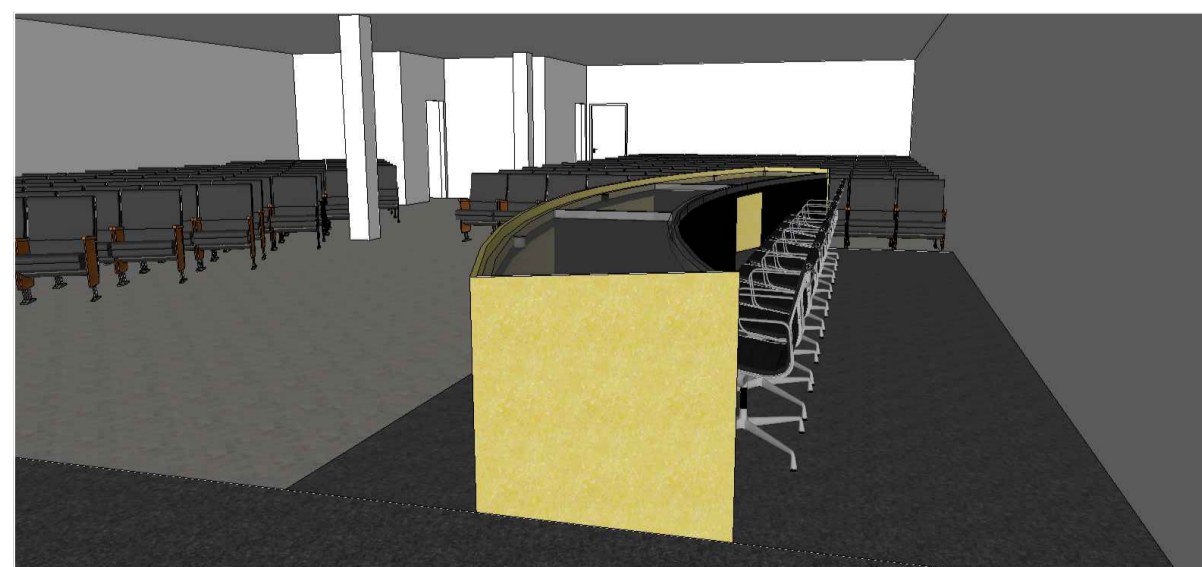
CORTE TRANSVERSAL ESC: 1/25



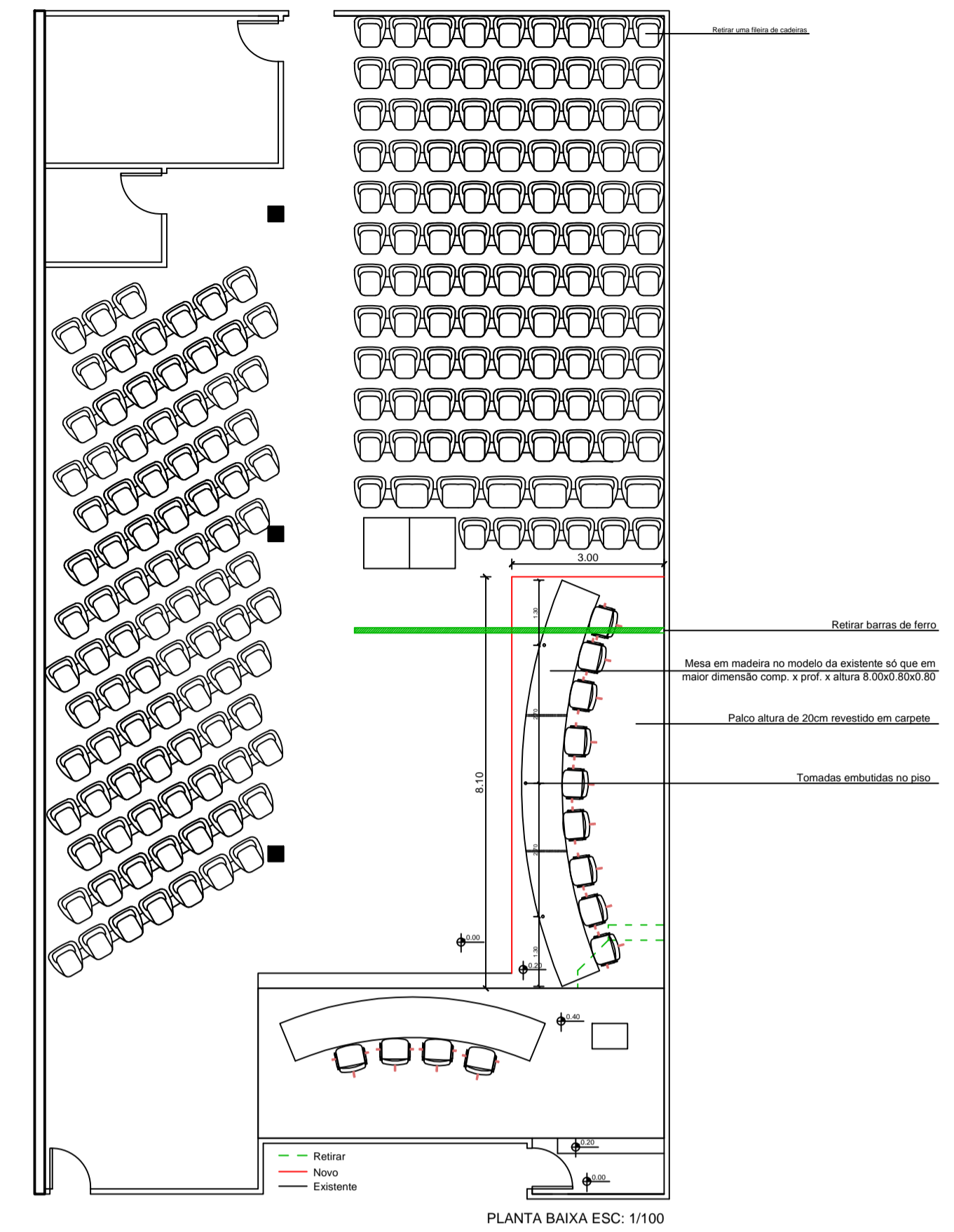
VISTA LATERAL ESC: 1/25




VISTA FRONTAL ESC: 1/25



VISTAS 3D



PLANTA BAIXA ESC: 1/100

 <b>PREFEITURA DE PALMEIRA DAS MISSÕES</b> SECRETARIA DE PLANEJAMENTO E MEIO AMBIENTE <small>Praça Nassif Nassif, nº 289 - Centro - Palmeira das Missões - RS - CEP 98300-000          Telefone: (51) 3742-3084 Fax: (51) 3742-3089          http://www.palmeiradasmissoes.rs.gov.br          email: planejamento@palmeira.rs.gov.br</small>			
ASSUNTO	BANCADA PARA PLENÁRIO DA CÂMARA	ÁREA	-
PROJETO	SABRINA FURINI SULZBACH Arquiteta e Urbanista	CAU	<b>A107286-2</b>
EXECUÇÃO		DATA	<b>Nov/2015</b>
PRANCHA	<b>01</b> PROJETO BANCADA	ESCALA	<b>Indicada</b>